



User Guide

Dual Port Gigabit PCIe x1 Network Adapter

Model No.: XM-NA3821

For the most up-to-date information, please visit www.x-mediausa.com

Version 1.0

Contents

Package Contents	3
Chapter 1 Product Overview	3
1.1 Introduction	3
1.2 Features	3
1.3 LED Status	4
Chapter 2 Installation Guide	4
2.1 Hardware Installation	4
2.2 Software Installation	5
2.2.1 For Windows 7	5
Appendix A: Specification	8

TRADEMARKS

MS-DOS, Microsoft, Windows 95/98/98SE/NT/2000/ME/XP/7/8/8.1/10 are trademarks of Microsoft Corporation
Apple, Macintosh and Mac are trademarks of Apple, Inc.

*All other third-party brands and names are the property of their respective owners

Package Contents

The following items should be found in the package:

- XM-NA3821 Dual Port Gigabit PCIe x1 Network Adapter
- Low profile bracket
- One CD Disk contains Drivers and User Guide

Note: *The above list is for reference only. The actual content may differ according to the product you purchased. Please save the original packaging material for future reference. If any of the listed items are damaged or missing, please contact with your seller.*

Conventions

The “Adapter” mentioned in this User Guide stands for XM-NA3821 without any explanations.

Chapter 1 Product Overview

1.1 Introduction

The Adapter, XM-NA3821 is a highly integrated and cost-effective Dual Gigabit PCIe Ethernet Adapter which is fully compliant with IEEE 802.3, IEEE 802.3u and IEEE 802.3ab standards. This Dual Port Gigabit network adapter keep low cost and eliminate usage barriers. It is the easiest way to upgrade a network environment from 10/100Mbps to 1000Mbps. It supports 10/100Mbps network speed automatically both in Half-Duplex and Full-Duplex transfer mode, and 1000Mbps in Full-Duplex transfer mode, by using Auto Negotiation technology to detect the network speed.

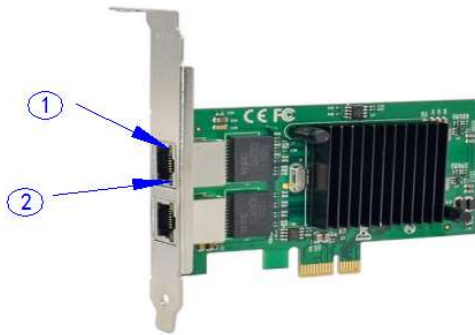
1.2 Features

- Complies with IEEE 802.3, 802.3u, 802.3ab standards
- Complies with PCI Express host interface specification v2.0 with 2.5GT/s BUS width
- Complies with PCI Bus Power Management Interface specification Rev 1.1
- Complies with Dual Port 1GbE RJ-45 port
- PCI-Express 1-Lane (x1) Interface
- Layer 2 functions: IEEE 802.3x Flow Control – IEEE 802.1q VLAN
- Support Half/Full Duplex mode and 802.3x Flow Control

- Support 10/100/1000Mbps NWAY Auto Negotiation
- Support Jumbo Frame to 9.5K bytes
- Support IPv 4, IPv 6 Protocols
- Support UDP.TCP and IP Checksum offloading
- Support Next Generation VMDq (8VMs)
- Wake-on-LAN and remote wake-up support
- Crossover Detection & Auto-Correction
- Support Standard and Low-Profile Chassis
- LED indicator for monitoring Link/Act

1.3 LED Status

The Link/Act LED of Adapter indicates 10/100/1000Mbps status. They will light when connection is built, and glitter when the Adapter is transmits and receive data.



1. 100Mbps Link/ACT LED
2. 1000Mbps Link/ACT LED

Note: When 10Mbps connection is built, ①&② LED will not blink.

Chapter 2 Installation Guide

2.1 Hardware Installation

To Install the Adapter, please follow these steps listed below:

1. Turn off your computer and unplug the power cord and all cables
2. Remove your computer's case cover

3. Locate an available PCIe slot
4. Remove the screw that secures the slot bracket (the small piece of metal that covers the opening for PCIe card on the back panel of your computer), then remove the slot bracket
5. Carefully insert the Adapter into the PCIe slot. Please avoid touching the gold connector of the Adapter
6. Secure the Adapter to the case by using the screw you removed from the slot bracket
7. Reinstall your computer's case cover
8. Plug in the power cord and all other cables, and then turn on your computer

2.2 Software Installation

This section will guide you through the installation procedures for Windows 7. Please follow the steps.

2.2.1 For Windows 7 Installation

1. Insert the CD driver disk into CD-ROM drive. The Autorun setup program will display, or you click on the "Browse CD" to find other OS drivers in the CD.
2. Click **Driver Installation** button to install.
3. Restart Windows to complete the installation.

Besides, you can also use the following way to update driver software:

1. Insert the CD driver disk into the CD-ROM drive.
2. Right click the icon **Computer** on the desktop, and then click **Manage**

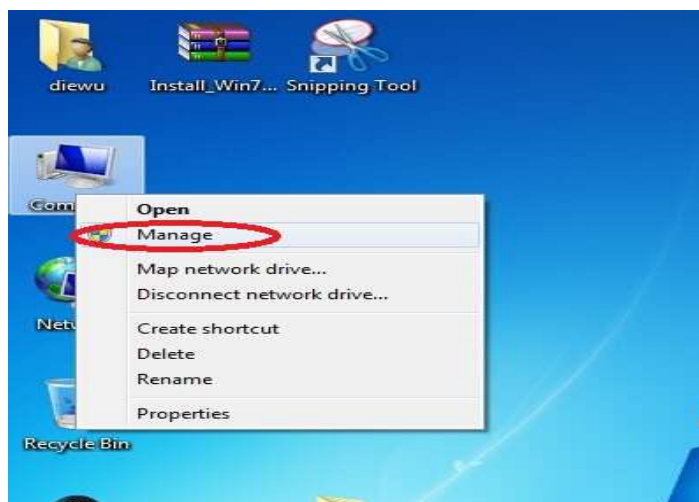


Figure 2.1

3. The **Computer Management** screen will appear. Click **Device Manager**, and then

you will see various options on the right side. Click **Other Devices**, and then from the drop-down list, please find **Ethernet Controller**. Right-click it and then select **Update Driver Software**.

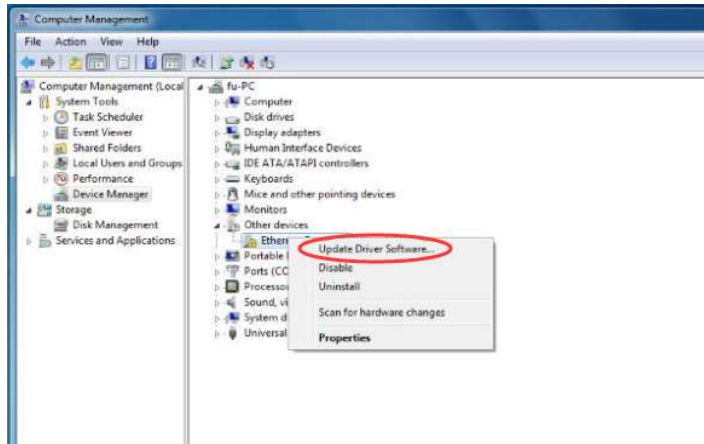


Figure 2.2

4. The **Update Driver Software** window will show up. Select **Browse my computer for driver software**.

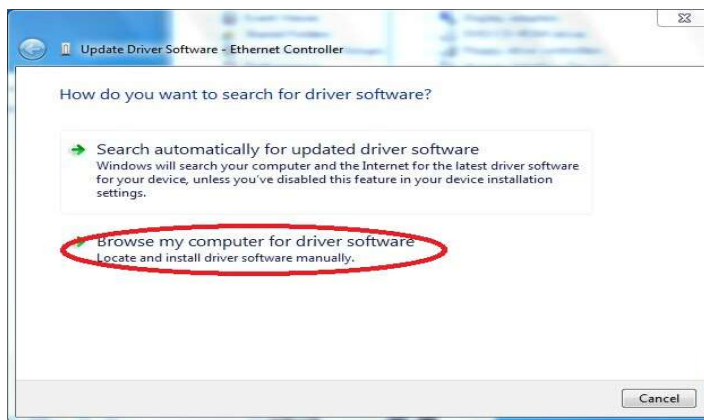


Figure 2.3

5. Browse and choose the system driver location from Computer, and then click **Next**.



Figure 2.4

6. Wait a few seconds for the installation.

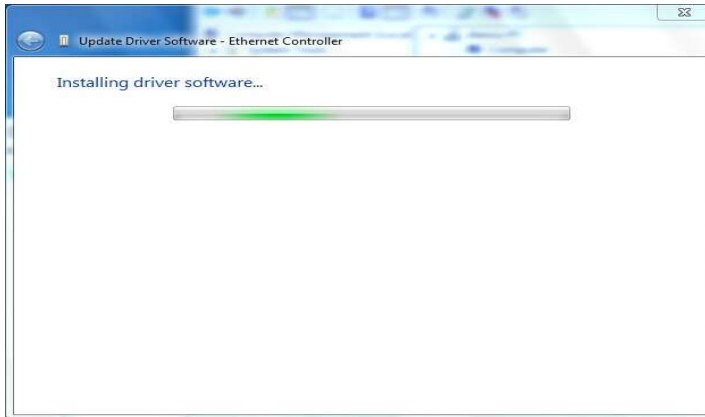


Figure 2.5

7. Click **Close** to finish the installation.

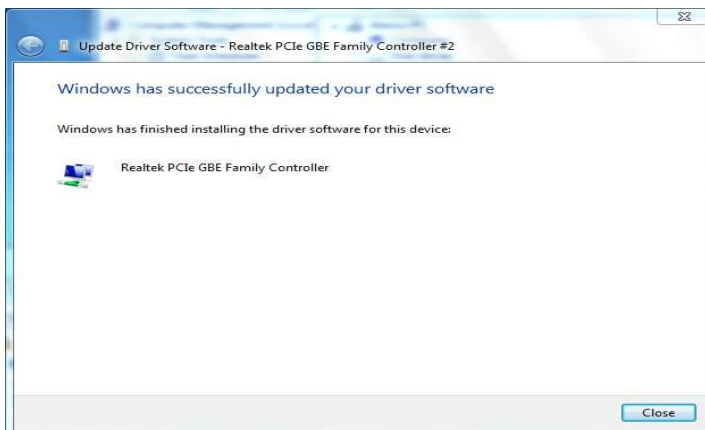


Figure 2.6

Appendix A: Specification

Specifications:	
Standards:	IEEE 802.3, 802.3u, 802.3ab, 802.3x, 802.1q, 802.1p
Chipset:	Intel JL82575EB
Interface:	32-bit PCIe x1 Standard
	2*10/100/1000Mbps RJ-45 port
Data Transfer Rate:	10/100/1000Mbps for Half-Duplex mode
	20/200/2000Mbps for Full-Duplex mode
Network Media:	10Base-T: UTP Cat. 3, 4, 5, cable (Maximum 100m)
	EIA/TIA-568 100Ω STP (Maximum 100m)
	100Base-TX: UTP Cat. 5, 5e cable (Maximum 100m)
	EIA/TIA-568 100Ω STP (Maximum 100m)
	1000Base-T: UTP Cat. 5e, 6 cable (Maximum 100m)
Jumbo Frame:	9.5K Bytes
Flow Control:	IEEE 802.3x Flow Control (Full Duplex)
LEDs:	Link/Act
Operating Temperature:	0° ~ 40° C (32° ~ 104° F)
Storage Temperature:	-40° ~ 70° C
Operating Humidity:	10% ~ 90% Non-Condensing
Storage Humidity:	5% ~ 90% Non-Condensing
Supported OS:	Windows 2000/XP/Vista/7/8/8.1/10; Linux
Emission(EMI):	FCC; CE